

THE GROUPE IN 2025

€6 bn
in annual revenue
from insurance

€212m
in net income

€9.4bn
in equity
(Solvency II eligible)

249%
Solvency ratio

€32.7bn
in assets under
management

A+ (Outlook stable)
Rating by Fitch Ratings
and Standard & Poor's
Global

180,000
members and clients

4,800
employees

More than **600**
partner brokers

7 international
operating locations

SMABTP, more than an insurer

For over 165 years, SMABTP has supported those who build.

A leading insurance provider in France and Europe, the Group has developed recognized expertise serving construction and real estate professionals. True to its mutual model, it places the interests of its members, proximity, and service quality at the heart of its approach.

SMABTP is built on a strong conviction: insurance is a long-term commitment. A commitment to protecting projects and responsibilities. A commitment to supporting professionals, day after day, in the reality of their business. A commitment to anticipating changes in a transforming sector, to offer reliable, useful, and innovative solutions.

This ambition is embodied every day by the Group's teams. Through their expertise and dedication, they make SMABTP a strong and trusted partner, capable of sustaining long-term action.

With one clear purpose: creating lasting value for its members and clients and contributing to their success.

*An insurer committed alongside
those who build.*



Registered office
8 rue Louis Armand • CS 71201 • 75738 PARIS Cedex 15 • smabtp.fr

Key figures 2025



Communication Department - june 2026 • Photo credits: ©gettyimages, ©adobestock



SMABTP reaches a new milestone and confirms the strength of its model



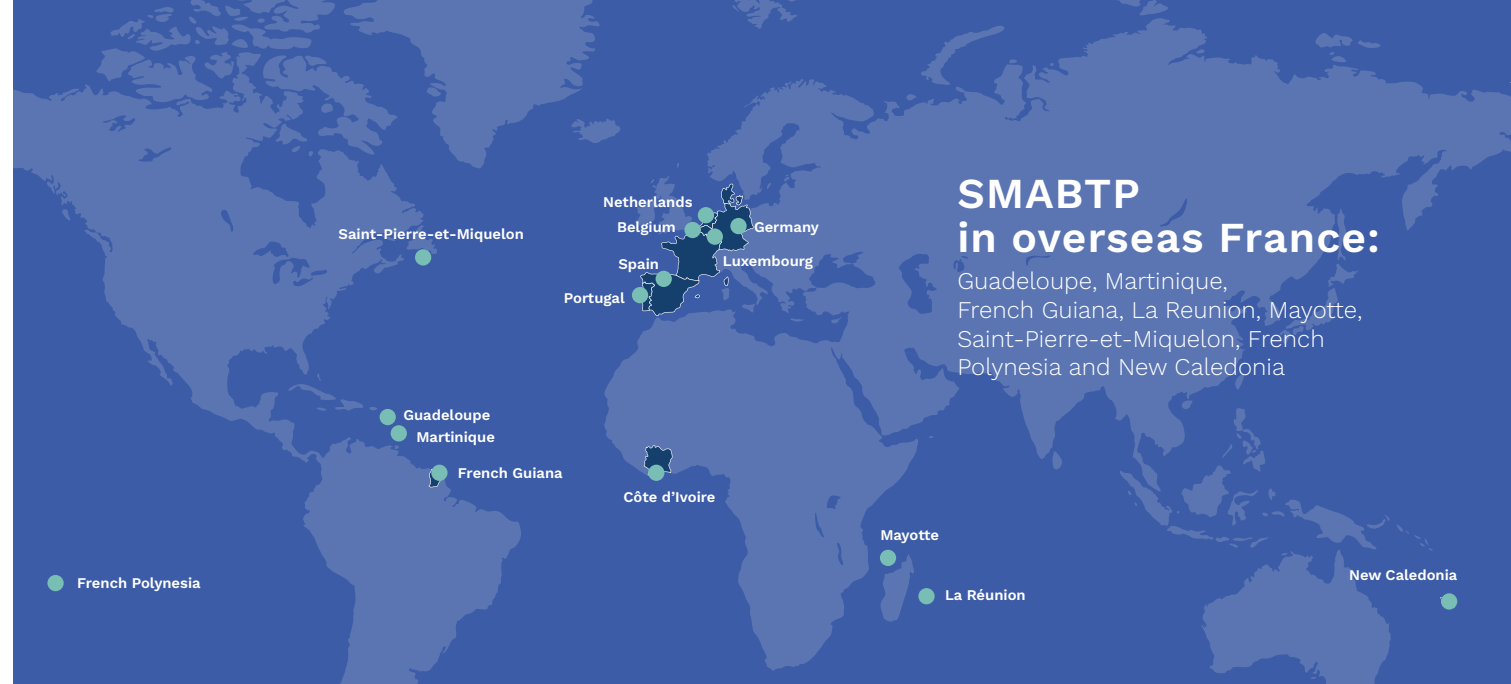
SMABTP entered 2025 with renewed ambitions driven by its three-year strategic plan, *“Growing Together.”* After this first year, the results achieved validate the chosen trajectory and confirm the Group’s ability to combine sustained growth with financial strength. They also reflect the commitment of our teams and the renewed trust of our members and partners.

Our revenue has reached a new milestone, exceeding €6 billion, driven by strong performance in our core business, construction insurance, along with the benefits of diversification initiatives implemented in recent years and the confirmed recovery of the Life business.

With these results and strengthened solvency, SMABTP moves forward with confidence in the continuation of its strategic plan. The Group has never been better positioned to support its clients and members, and more broadly the construction and real estate sector, at a time when its role is more essential than ever.

Pierre Esparbes

Chief Executive Officer, SMABTP Group



SMABTP in overseas France:

Guadeloupe, Martinique, French Guiana, La Reunion, Mayotte, Saint-Pierre-et-Miquelon, French Polynesia and New Caledonia



SPAIN

Head office: **Madrid**
A subsidiary since **1989**
€53m in revenue



PORTUGAL

Head office: **Lisbonne**
A subsidiary since **2011**
€172,5m in revenue



CÔTE D'IVOIRE

Head office: **Abidjan**
A subsidiary since **2017**
€12.8m in revenue



BELGIUM & LUXEMBOURG

Head office: **Bruxelles**
A subsidiary since **2017**
€12,6m in revenue



GERMANY

Head office: **Cologne**
A subsidiary since **2023**
€10.4m in revenue



NETHERLANDS

Head office: **Rotterdam**
A subsidiary since **2023**
€178.8m in revenue